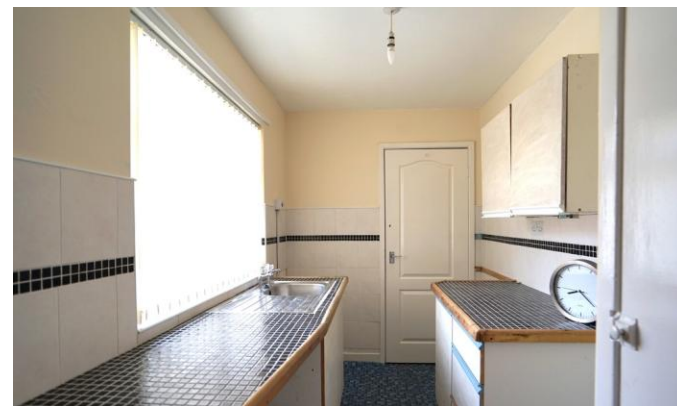




11 Harlow Street
Millfield
Sunderland
SR4 7AR

£575 pcm

Mid Terraced Bungalow
Two Bedrooms
Ideal Location
Available Immediately
Enclosed Yard to Rear
Close to All Local Amenities





Safe and Secure welcome to the rental market this two bedroom mid-terraced bungalow, available immediately on an unfurnished basis. Situated on Harlow Street, in the popular area of Millfield, the property boasts excellent public transport links and access to all local amenities.

Briefly comprising of: an entrance hall, lounge, kitchen, two spacious bedrooms, family bathroom and enclosed yard to rear.

If you are interested please give our office a call on 0191 385 4477!

ENTRANCE PORCH

Double glazed entrance door.

ENTRANCE HALL

LOUNGE

13' 02" x 12' 03" (4.01m x 3.73m) Double glazed window to front and radiator.

KITCHEN

10' 04" x 5' 6" (3.15m x 1.68m) Fitted wall and base units, work surfaces, single bowl sink and drainer unit, electric cooker point, space for washing machine, radiator, built in storage cupboard and double glazed window to rear.

REAR PORCH

Double glazed door to rear.

BEDROOM 1

13' 02" x 12' 03" (4.01m x 3.73m) Double glazed bay window to front and radiator.

BEDROOM 2

6' 03" x 9' 07" (1.91m x 2.92m) Double glazed window to rear, combination boiler and radiator.

BATHROOM

White two piece suite comprising of a pedestal wash hand basin, low level WC, wet room style shower, radiator and double glazed window to rear.

REAR YARD

Mainly paved area enclosed by walled boundaries with roller shutter.

Local Authority
Council Tax Band
EPC Rating

TBC

Houghton le Spring
24-25 Westbourne Terrace
Houghton Le Spring
Tyne And Wear
DH4 4QT

Contact
0191 3854477
info@safeandsecureproperties.co.uk
o.uk
safeandsecureproperties.co.uk

Agents Note: Whilst every care has been taken to prepare these particulars, they are for guidance purposes only. All measurements are approximate and are for general guidance purposes only and whilst every care has been taken to ensure their accuracy, they should not be relied upon and potential buyers/tenants are advised to recheck the measurements.